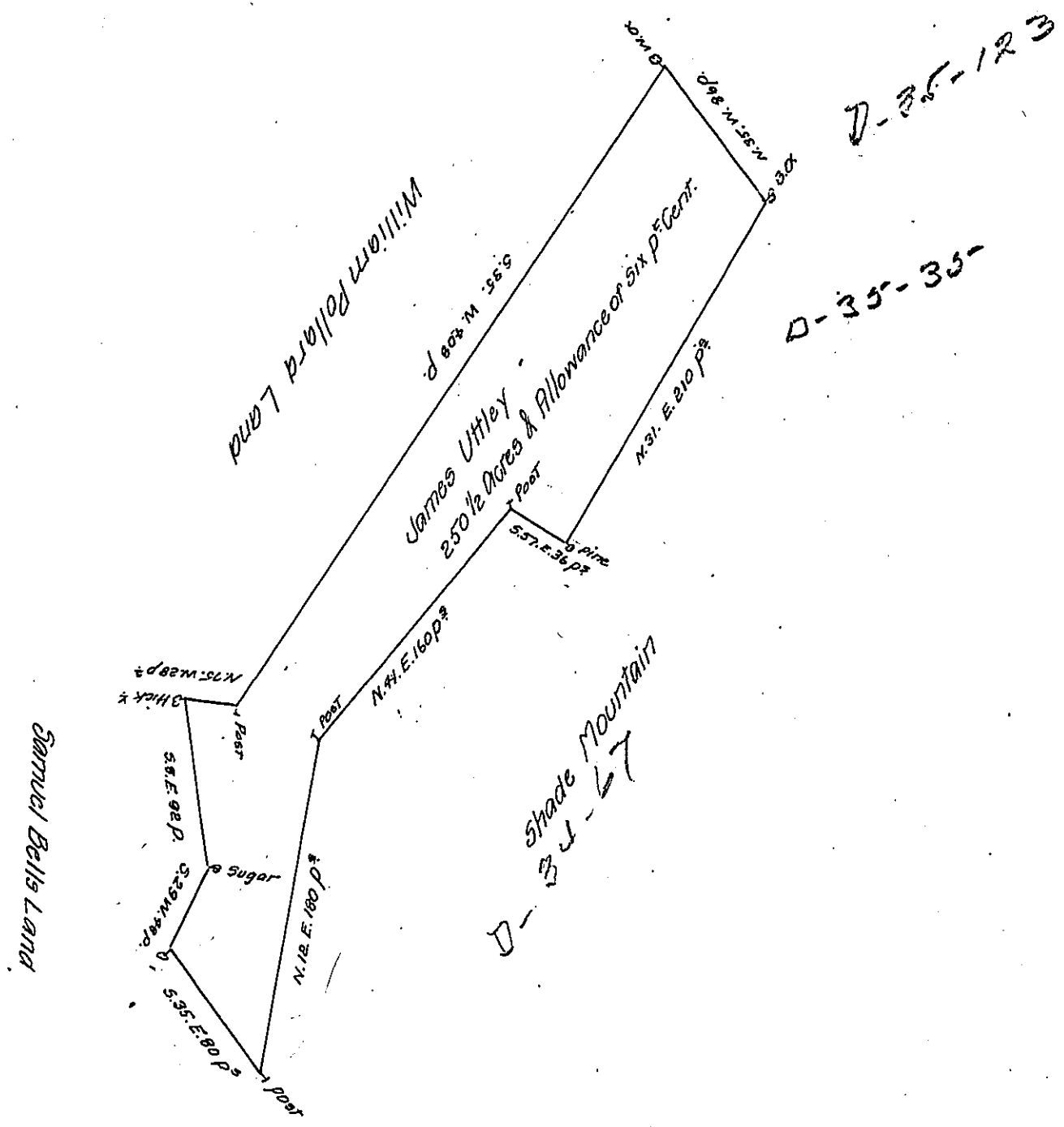


FORM NO 1.



A Draught of a Tract of Land Situate in Sherly Township  
 Bedford County Black Log Valley Adjoining Land of William Pollard  
 & Samuel Bell Containing two hundred and fifty  $\frac{1}{2}$  Acres & the Usual  
 Allowance of Six p<sup>t</sup> Cent for Roads Surveyed 5<sup>th</sup> day of October 1789  
 In Pursuance of a Warrant Granted to Jonas Uttley Dated September  
 10<sup>th</sup> 1789.

Goblitz Woods D.S.

To John Lukens Esq<sup>r</sup> J.G.

IN TESTIMONY that the above is a copy of the original remaining on file in  
 the Department of Internal Affairs of Pennsylvania, made  
 conformably to an Act of Assembly approved the 16th day of  
 February, 1833, I have hereunto set my Hand and caused  
 the Seal of said Department to be affixed at Harrisburg,  
 this fifteenth day of November 1907

*Henry Howell*  
 Secretary of Internal Affairs.